

Zip strikes a dynamic rhythmic balance



Stemming from the collaboration between Ceramica Bardelli and Meneghello Paoletti Associati, Zip is a collection of designer tiles with a bold twist that transforms ceramic tiling into a dynamic visual system, constantly poised between rhythmic regularity and asymmetry.

The 600 by 600mm, and 600 by 1,200mm, rectified porcelain tiles, 10mm thick, are also available with shaped edges to create unusual decorative effects reminiscent of the full and empty volumes of zips. With their matt finish and uniform surface texture, the three

colours of Zip - anthracite black, ivory white, and antique terracotta - act as a neutral background capable of enhancing the decorative role of the joints.

These form an essential element of the design, bringing the tiles together in a single, continuous surface.

The tiles and joints become interplay, in a rhythmic balance of opposites: solids and voids, concave and convex elements, coloured joints and neutral surfaces.

Placing perfectly modular rectified and shaped tiles alongside one another makes for countless compositional possibilities limited only by the architect's or the interior designer's imagination.

Zip may be used on floors and walls, both in residential and non-residential settings.

W: <https://ceramicbardelli.com/en>

Multiboard features in Midlands mansion as marble backer-board



The redevelopment of a large residential property in Sutton Coldfield to create a £5 million mansion is making use of Marmox Multiboard's unique benefits, both inside and out, featuring within the pool/spa complex and then around a terraced patio area..

The six-bedroom home, close to the town's famous park and golf course, has been extended to the rear and has had a third floor added during a year-long rebuild, creating additional bedrooms, living rooms and high specification recreational space.

As one of the specialist package contractors on the project, West

Midlands based IMAC Joinery has installed more than 100 of the 600 by 1,250mm Multiboards using the quick and reliable Marmox 60mm dowels. The 10mm thick boards are held securely against the concrete blockwork, offering an ideal substrate for applying the marble tiles. All of the boards, dowels and Marmox waterproof jointing tape were supplied by Galaxy Insulation and Dry Lining in West Thurrock.

Marmox Multiboards are manufactured from extruded polystyrene (XPS), faced on both sides with mesh reinforced, polymer cement mortar and offer a

range of positive physical characteristics in addition to being fully waterproof. They are light to handle and easy to cut, while still being able to sustain substantial loadings if required and they further offer good thermal insulation performance, helping to cut condensation risk.

The Director of IMAC Carpentry, Ian McLeod, commented: "Although we work right across the West Midlands and other parts of the country, we hadn't previously used Marmox Multiboards when the tiler suggested them for a substrate board. The distributor - Galaxy Insulation - has supplied us with the complete package including tape and fixing dowels. We've installed over 100 boards across the job and found them very straightforward to cut and fix."

As well as being suitable as a tile backer, Multiboards also have very good load carrying capabilities and are regularly used as part of floor build-ups and for creating wet rooms. And at a public swimming pool in Peterborough they were used to replace badly deteriorated ceiling panels high above the ground, where ease of installation and resistance to moist aggressive conditions were paramount.

T: 01634 835290

E: sales@marmox.co.uk

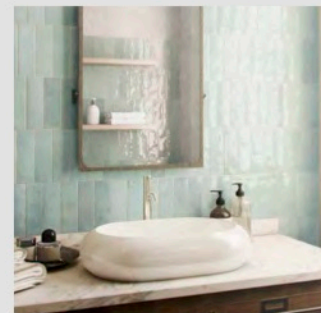
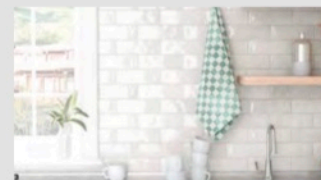
W: www.marmox.co.uk

Colourful variety from Bestile



With the Nolita range by Bestile, pretty design elements can be chosen in various colours.

These 65 by 200mm and 200 by 200mm porcelain tiles are available in Blanco, Cielo, Beige, Gris, Marine, Rosa, Negro, Burdeos, and Verde colour options. They are complemented by Jolly strip decors in 15 by 200mm.



One of the most attractive characteristics of the Nolita range is the fact that this product offers wide and authentic colour variation: a quality that is much appreciated by today's more discerning tile buyers.. Ruben Rivero - Ramos UK & Ireland Agent M: +44 7523 950791 E: ruben@bestile.es **W:** <https://en.bestile.es>